



JENSON

A Z U R E

V2 EDITION



Use the QR code or visit www.jensonecig.com and enter 'Azure' into the search bar for more information on this product.

THE BELOW WARNING ONLY APPLIES WHEN THIS DEVICE
HAS BEEN FILLED WITH E-LIQUID CONTAINING NICOTINE

**This product
contains nicotine
which is a highly
addictive
substance**



Thank you for choosing the Azure V2 electronic mod from Jenson E-Cig Ltd.

To ensure that you get the best out of your purchase we recommend that you take a little time to read this manual carefully. If you have any further questions on using this or any other Jenson product please contact our Customer Services team (details below). Alternatively visit our website, www.jensonecig.com, where there are a series of useful "How-To" videos available.

The Azure V2 kit:

This kit includes the distinctive Azure electronic box mod and the 2ml Lumiere tank, offering users a great way to experience sub-ohm vaping with up to 75 watts of power in a stylish and attractive package.

There are a host of options to tailor your vaping experience to your personal preference, including wattage, temperature control and custom vape mode settings, adjustable airflow and compatible high-quality sub-ohm coils, available in 0.3Ω and 0.5Ω stainless steel variations, that will allow you to enjoy high-VG vaping and Jenson's exciting new range of high-VG liquids.

Additional unique features include twin fire buttons, supporting left and right-handed operation, and a useful custom curve mode function to tailor your personal preferred vape, all wrapped up in a subtly curved unit that is comfortable to hold and striking to look at.

Vaping is all about choice. Make yours the right one with Azure and Lumiere, from Jenson E-Cig.

A Z U R E

V2 EDITION



Available in White & Black and Black & Silver

Product Information

- Output wattage 5-75W
- Twin fire buttons, supporting left and right-handed operation
- Wattage control
- Temperature control
- Custom Vape Curve settings
- Adjustable airflow
- Top fill tank
- Battery status monitor
- Ohms meter
- OLED screen
- Ability to vape while charging
- Inherent safety protective measures with the electronics regulating the battery output

Specifications

LUMIERE TOP FILL TANK

- Capacity: 2ml
- Diameter: 22mm
- Length: 48mm
- Weight: 60g
- Top-fill swivel system for trouble-free refilling
- Strengthened Pyrex glass
- Enhanced air flow
- Replaceable mouthpiece
- 510 thread

AZURE ELECTRONIC BOX MOD

- Length: 49mm
- Width: 26mm
- Height: 103mm
- Connection: Spring loaded 510
- 24/28 AWG Micro USB charging lead
- Short circuit protection, over charge and over use protection
- Battery voltage range: 1.5V-4.5V
- Battery Watt range: 5-75W
- Temperature range: 100-315°C /200-600°F
- 18650 IMR 2600mAh rechargeable battery
- Charging time: 2 to 3 hours

This kit includes:

- One Azure electronic box mod
- One 2ml Lumiere Tank with pre-installed 0.5 Ω stainless steel coil
- One 18650 IMR 2600mAh high drain Battery
- An additional 0.5 Ω stainless steel coil and a 0.3 Ω stainless steel coil
- Spare O-rings
- Spare plastic mouthpiece
- Micro USB Cable
- Silicone battery protector
- Grip band



Battery Cover

Azure electronic box mod



Spare mouthpiece and O-rings



Grip Band

Lumiere 2ml tank



Mouthpiece



Top-Cap



Glass Tube



Coil



Tank Base

Airflow System



Micro USB Cable



18650 IMR 2600mAh Battery
(shown with silicone battery protector)

Inserting the IMR battery

- Take off the battery cover at the back of the Azure device, using your thumbnail in the slot at the base of the unit to gently prise off the cover.
- Insert the battery into the port taking care to ensure that the polarities – the plus and minus symbols on the side of the battery - are correctly matched to your device.
- Always take care to store your batteries correctly when not in use. When the batteries are out of the handset the best way to store them is in a dedicated battery case which prevents contact with metal and associated short circuits. A Jenson silicone battery protector is provided with this pack for this purpose.
- It is a good idea to always have a charged battery at hand, ready to go. Spare batteries and silicone protectors can be purchased at your local Jenson stockist or online at www.jensonecig.com

Connecting the Lumiere Tank to your Azure device

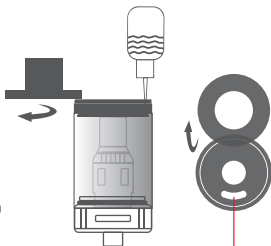
Simply screw the Lumiere Tank in a clockwise motion onto the Azure box mod ensuring you do not over tighten.

Filling the Lumiere tank with high-VG e-liquid

Holding the tank with one hand, use the other to slide the top cap counterclockwise.

Carefully insert the nozzle of the high-VG e-liquid bottle into the top filling hole. Pay attention not to drip into the central airflow tube.

Close the cap carefully and firmly. Ensure you let it stand for several minutes to completely saturate the organic cotton in the coil.



Priming your Lumiere tank

It's very important to make sure that your tank and its coil are primed with high-VG e-liquid before you attempt to vape.

Priming is an easy process but an important one: **a coil will be ruined in seconds if it has not been properly primed.** On first time use of a new coil users should allow at least 5 minutes for the liquid to soak into the coil before attempting to vape. You should also take a few deep draws on your device without firing the button and heating the coil. This will help to draw liquid into the coil and aid the priming process.

A few minutes patience will make a big difference to the quality of your vape. Do not let the tank run dry before refilling. The e-liquid level must always be above the soak holes in the tank body but we advise you to keep the tank a minimum of half full at all times for the best quality vape. The tank should be maintained regularly to ensure the best quality vaping experience and to extend the life of your equipment. Online guides can be found at **www.jensonecig.com**.

WHAT ARE HIGH-VG AND HIGH-PG LIQUIDS? WHAT'S THE DIFFERENCE?

Before we explain Coil and Mode selection on your Azure and Lumiere devices it is important to understand what type of vaping experience and what type of e-liquid you want to enjoy. Understanding exactly what PG and VG is, the difference between the two and the qualities that they offer, is an important part in this process.

Propylene Glycol (PG) and Vegetable Glycerin (VG) are the main constituent ingredients which, combined with flavouring and nicotine, make e-liquid. PG is used in a range of household products including asthma inhalers and shampoo and also as a food additive. VG is derived from vegetable oil and is found in a host of food items, particularly low carbohydrate foods where its slightly sweet taste is used to add sweetness and moisture.

Both fluids are odourless and colourless but they have distinctly different properties as far as vaping is concerned. VG is considerably thicker than PG and generates clouds of rich vapour while PG is generally seen to be the better carrier of flavour. PG also supplies the “throat hit” that many vapers seek as it is similar to the sensation experienced when smoking tobacco. Most modern e-liquid uses a combination of the two fluids, though the ratio can vary dramatically according to the desired effect. Jenson liquids are sold in 70/30 PG/VG and 30/70 PG/VG ratios. Our high-VG e-liquid provides a much smoother hit than the high-PG range and is geared towards sub-ohm vaping (using coils with a resistance lower than 1ohm). Our high-PG e-liquid provides more concentrated flavour and, with the throat hit common to PG, provides a vaping experience that is closer to that associated with smoking tobacco.

High-PG liquids can only be used with the E-VO tank and its 1.8ohm coil.

IMPORTANT INFORMATION ON COIL SELECTION

It is important to be careful to choose the correct coil, device and tank to suit the type of e-liquid - high-PG or high-VG - you're using.

The Lumiere tank is compatible with coils in two different resistances, 0.3ohm and 0.5ohm, which allows Jenson users to enjoy the rich, dense vapour found in our range of tasty high-VG e-liquid. **Temperature Control (TEMP) mode is only compatible with the 0.3ohm coil.** Please note this coil can also be used in Variable Wattage (VW) mode.

How to read coil resistance

Whenever you switch coils, before vaping with the new coil you will need to allow the device to read the coil resistance (you will not be able to vape until you have done so). This is a very simple process, just press the down/left navigation button and fire button at the same time. The screen will display “Set resistance” and the appropriate ohm reading for your coil. You are now ready to load your tank with high-VG e-liquid, prime the new coil and vape.

How to choose different coil material

When using Temp mode you will need to select your coil material. Once your Azure is set to Temp mode (hit the fire button three times for mode selection) you can set the coil type by pressing the up/right navigation button and fire button at the same time. You can choose from NI (Nickel), SS (Stainless Steel) or TI (Titanium). You should only use SS coils in Temp and VW modes.

Always remember to prime your coil before first use.

N.B. Please note that Jenson supply only stainless steel coils for use with our Lumiere tank. The NI and TI modes are for users who use another tank and coil combination with our Azure mod.

Mode Selection

CLICK EITHER ONE OF THE TWO FIRE BUTTONS FIVE TIMES TO TURN ON THE DEVICE. The OLED panel will light up with the Jenson crest and then display the current settings including resistance, voltage, wattage or temperature. Remember, the Azure mod has an auto-lock safety feature that is activated after three minutes of inactivity. Press any button while the lock is in place and a message on the panel will confirm the lock is active. Simply press both navigation buttons simultaneously to unlock. Press the fire button 3 times to select the mode.

There are three available options, VW, TEMP and VAPE:

VW	Variable Wattage
TEMP	Temperature Control
VAPE	Custom Vape Mode (hard, soft, custom)

On startup, the Azure will revert to the settings in place when it was switched off. Use the left/right, up/down navigation buttons to choose your preferred mode and the fire button to make your selection. Once you have set your preferred mode use the navigation buttons to increase or decrease your wattage/temperature settings as desired. To answer the obvious question, although we do suggest a recommended setting for each coil (details below), there is no right way to set these parameters, this is all about personal choice. Finding out what works best for you is part of the fun!

Recommended Wattage Settings (VW Mode)

OHMS	Min	Max	Recommended
0.50Ω	15W	35W	22W
0.30Ω	15W	42W	26W

AZURE OPERATING MODES

Starter kits are a great intro into the world of e-cigarettes. Good kits are inexpensive and easy to use but typically users will not have the ability to make adjustments to how the device works. Having the ability to tune the settings that control temperature and/or the power that is delivered to your device helps you to tailor your experience to suit your preferences, so that flavour, throat hit and vapour are delivered just the way that you like it.

The Azure box mod has three active modes, Variable Wattage (VW), Temperature Control (TEMP) and Custom Vape (VAPE) Mode to help you to find your ideal vape.

Press the fire button three times to enter the mode selection screen. You will be presented with three options: VW, TEMP and VAPE. Use the navigation buttons to move between the available options and hit the fire button to select your preferred mode.

Variable Wattage (VW)

Watt settings will determine the level of heat delivered to your vapourizer. Simply put, more watts equals more heat and warmer vapour. Operating at lower wattages will deliver a cooler vape.

It is important to have the correct amount of power delivered to your device to suit the resistance of the coil you are using. The lower the resistance on your coil, the more power you can throw at it, the higher the resistance, the less power, or wattage, you need for your tank to perform. Be careful, though; if the power is set too high for your coil then it will burn out quickly and be rendered unusable.

Variable Wattage mode allows you to find the ideal watt settings for you (and your coil/e-liquid combination), set it and forget it. When in Variable Wattage mode the battery automatically adjusts the voltage to provide the wattage you selected, regardless of the resistance of your coil, so that you get a consistent vapour volume and intensity.

Use the navigation buttons to increase/decrease the current wattage settings. Refer to the table above for minimum/-maximum and recommended settings for your coil.

On start up the Azure will revert to the settings that were in use when it was switched off. Our table on page 9 shows the minimum, maximum and recommended settings for each Jenson coil.

Temperature Control (TEMP)

NB: WHEN USING THE LUMIERE TANK TEMPERATURE CONTROL MODE IS ONLY COMPATIBLE WITH THE LUMIERE V8 0.3ohm STAINLESS STEEL COIL.

The Temperature Control (TEMP) feature of your Azure box mod lets you apply a pre-set temperature in Celsius / Fahrenheit that your coil will not exceed. It will constantly monitor the coil temperature and once your preferred temperature setting is reached it will adjust the power delivered to the coil, throttling back and forth when required, to maintain the set value.

Using the Temperature Control settings can help avoid coils getting too hot and burning out when they are firing at very high temperatures. Once you have your device tuned to your preferred settings it allows you to vape at your exact sweet spot without worrying about your coils getting too hot and burning out or having a detrimental effect on the flavour of your liquid.

Use the navigation buttons to increase/decrease the current temperature settings. Refer to the table above for minimum/maximum & recommended settings for your coil.

Please remember, whilst using Temperature Control (TEMP) Mode you should only use a Jenson Lumiere V8 0.3ohm stainless steel coil, not the Lumiere V8 0.5ohm coil.

Custom Vape Mode (VAPE)

NB: CAN ONLY BE RUN IN VW MODE

The Azure electronic box mod includes a custom vape mode that allows you to define your own "Vape Curve". Essentially this means that you control the amount of power that the device delivers over the course of an inhalation.

There are five steps within each curve and you can define a preferred power delivery, as a percentage of the current watt settings, to be set for each one of those five steps in the curve.

This functionality allows the user to make very fine adjustments to build their own perfect vape: you can start low and increase the power so that the vape becomes more intense the deeper and longer you draw or, alternatively, start with a boost of power and gradually fade off.

You can also use this function to select a constant power delivery to suit your preference, say 85% for a consistently softer vape or 125% for a harder delivery.

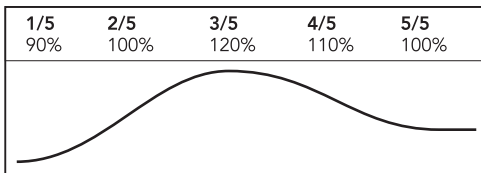
The device is shipped with two pre-set options of Soft and Hard.

After selecting Custom Vape mode, press the right navigation button and then the fire button. You will be presented with a choice of 3 modes, Soft, Hard or Custom. Use the navigation buttons to move between selections and hit the fire button to select your preferred mode.

Building a Custom Curve

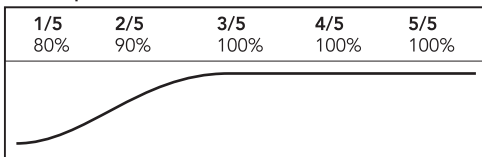
After selecting Custom Vape mode, press both navigation buttons simultaneously. You will see the current settings for step 1 of your curve. Use the navigation buttons to increase your percentage settings until you have your desired setting. Press the fire button to move onto the next step and repeat the process until all five steps of the curve have been updated and you're ready to vape!

Custom Vape Curve Example:

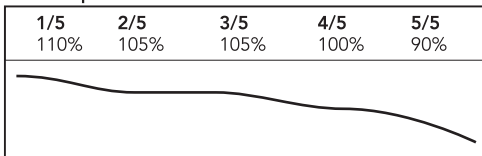


The settings for the preset modes are

Soft Vape Curve:



Hard Vape Curve:



How to vape

The Azure electronic mod is fitted with two fire buttons to suit both left and right-handed vapers.

Press either of the fire buttons on the side and inhale at the same time. Keep your finger on the button whilst inhaling on the mouthpiece.

Ensure you release your finger from the button when you stop inhaling. You can only hold down the button for a maximum of 10 seconds. Your device will automatically cut off after this as a safety precaution.

Replacing your Lumiere V8 coil

The coil is a consumable item and is designed to be easily replaceable once it has reached the end of its operational life. When you notice that flavour and/or vapour are reduced, it is time to change the coil. To replace the coil unscrew the Lumiere tank from the battery or mod and turn the tank upside down.

When attaching/detaching your tank from the battery or mod, take care to grasp the airflow connector rather than hold the Pyrex glass. This will prevent damage to the glass and its connecting parts.

Firstly, screw the drip tip and top cap off the tank; then screw the atomizer off the base and replace with a new Lumiere V8 coil.

You are now ready to reconnect the tank to your battery, prime the coil and begin to vape.

Adjusting the air flow

Adjusting the airflow on your tank can make a real difference to your vape experience. The Lumiere tank allows for precise adjustments to help users to find the settings that suit them. Simply twist the airflow ring at the base of the tank to increase or decrease the airflow, allowing either more or less air into the atomiser.

By closing the aperture and reducing the airflow you will notice a tighter draw, more like that associated with traditional cigarettes. By opening the airhole you will notice an airier vape.

Low Power and Charging

Battery Status: The OLED panel on the front of the Azure device will display the current level of charge. When the device indicates the battery level is low and needs replacing, the battery can be charged by connecting your Azure mod's USB charging port, via your high speed micro USB cable, to an appropriate charging device. These include your PC or laptop, a Jenson car charger or a Jenson Mains Adapter.

The OLED panel will display a battery increasing in charge during the charging process. When fully charged this will be shown as a solid battery.

Alternatively, you can remove the depleted battery and charge in a dedicated charging port.

The battery will take between 2 to 3 hours to charge fully.

Ideally you would have a spare IMR battery, charged and ready to go, to load into your device so you can enjoy uninterrupted use of your Azure while your battery is charging. Spare Jenson IMR batteries are available at your local Jenson stockist and online at [**www.jensonecig.com**](http://www.jensonecig.com).

Important Notice

All Jenson products should ONLY be charged using compatible Jenson chargers. Each type of charger of any electrical product has a specific power output which is compatible with the battery inside. These chargers are manufactured to ensure that only the correct amount of power is supplied. Using any other chargers including USB chargers, mains chargers, car chargers, phone chargers and chargers from different brands can mean that an excessive amount of power is applied. This can be dangerous and can cause damage to your product. Using any non-Jenson chargers will void any warranty on the product.

Warning

- Do not charge the device outdoors or near water.
- Do not use this device for anything other than vaping.
- Disassembling the device will void your warranty.
- Take care to dispose of the battery responsibly. Do not subject the battery to extreme temperatures.
- Keep all components away from children and pets.
- Most electrical or mechanical devices have a range of temperatures within which they will operate effectively. The recommended operating temperature range for this device is 5° to 45°C.
- This device is intended for use by adults. It should not be used by anybody under the age of 18.
- Not recommended for use by non-smokers.
- Do not use if you are at risk of heart disease, pregnant, breastfeeding or in bad health.
- If you have any adverse reaction while using this product stop using it immediately and seek medical assistance.
- This product contains small parts, ensure you keep well away from children.
- This device contains no user serviceable parts. Any attempts at repair will invalidate any existing warranty.
- Jenson E-Cig Ltd takes no responsibility for any damage to person or property caused through improper use of this product.
- Jenson will not warranty this product due to improper use or damage caused by the user.

Warranty

The Jenson Azure V2 Kit is made up of several separate components, some of which are consumable. The Azure Box Mod is covered with a 6-month warranty from the date of its original purchase.

Lumiere Tank

The Lumiere Tank is covered by a 3 month warranty. In the event of any problem with your Lumiere tank please contact us. We will instruct you on how to return the defective unit back to us for repair/replacement. If you have purchased a non-Jenson branded battery, and use that with a Jenson product, we are not liable for any issues caused due to a battery fault or improper battery usage.

Consumable items:

The battery will typically last around 200 cycles. Obviously how long it takes you to reach this limit will depend on frequency of use but you should expect to replace your battery every three to four months. Batteries are warranted for 6 weeks from the date of purchase. In the unlikely event of an issue with your battery it will have become apparent before then.

Any warranty claim is reliant on the user having registered their purchase and having a valid receipt.

PUSH THE BUTTON  MAKE THE SWITCH



CUSTOMER CARE:

t: 020 8619 1060

e: customerservices@jensonecig.com

Jenson E-Cig Limited PO Box 340,
Wallington SM6 6BT



DESIGNED IN THE UNITED KINGDOM
MADE IN CHINA TO UK/EU STANDARDS