



JENSON



***LUMIERE TANK***  
USER MANUAL

THE BELOW WARNING ONLY APPLIES WHEN THIS DEVICE  
HAS BEEN FILLED WITH E-LIQUID CONTAINING NICOTINE

**This product  
contains nicotine  
which is a highly  
addictive substance.**



**JENSON**



DESIGNED IN THE UNITED KINGDOM  
MADE IN CHINA TO UK/EU STANDARDS

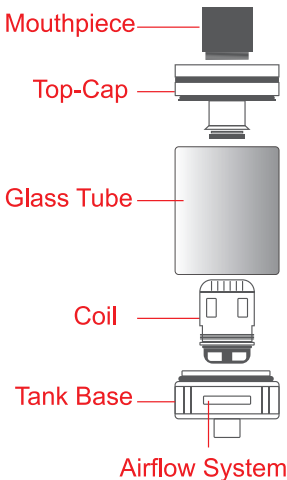
---

Proudly produced by Jenson E-Cig Ltd,  
PO Box 340, Wallington, SM6 6BT  
Customer Care: t: 020 8619 1060  
e: [customerservices@jensonecig.com](mailto:customerservices@jensonecig.com)

---

**[WWW.JENSONECIG.COM](http://WWW.JENSONECIG.COM)**

## Diagram of Lumiere tank



## Introduction:

The 2ml Jenson Lumiere tank has been designed to offer the perfect blend of performance, reliability and usability. The tank will supply smooth and flavourful clouds whilst its swivel top cap design provides a super-convenient, efficient refilling process.

Jenson E-Cig, constantly innovating to bring you the best vaping experience.

## This box includes:

- 1 x Lumiere top-fill tank (2ml)
- 1 x Lumiere V8 0.5 $\Omega$  S-Steel dual core coil (pre-installed) (Compatible with VW mode only: 20w-50w)
- 1 x Lumiere V8 0.3 $\Omega$  S-Steel dual core coil (Compatible with TC mode and VW mode: 30w-60w)\* See page 4
- 1 x Silicone grip band
- 1 x Spare O-ring pack
- 1 x User Manual

## Specifications:

Lumiere Tank:

Material: Stainless Steel and strengthened Pyrex glass

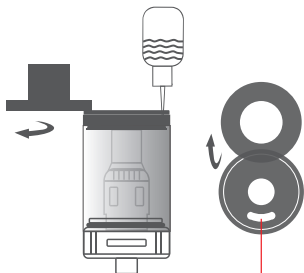
Size (incl mouthpiece): 22mmx48mm

Weight: 60g, Capacity: 2ml, Thread: 510

## Operating instructions:

### Filling with e-liquid:

1. Holding the tank with one hand, use the other to slide the top cap counterclockwise.
2. Pour the e-liquid through the top filling hole. Pay attention not to drip into the central airflow tube.
3. Close the cap carefully and firmly. Ensure you let it stand for several minutes to completely saturate the organic cotton in the coil.



Liquid top-fill hole

## **Replacing atomizer coil:**

Firstly, screw the drip tip and top cap off the tank; then screw the atomizer off the base and replace with a new coil. To control airflow rotate the bottom adjustable airflow system to your desired position.

If you need any additional information or have any questions about the products or its use, please contact our customer services team on: T: 020 8619 1060 or W: [www.jensonecig.com](http://www.jensonecig.com).

\*0.3Ω S-Steel dual core coil is compatible for use with Temperature Control and Variable Wattage modes with devices that provide that functionality. Operating range for TC mode: 100-315°C/200-600°F. It is important that you check your specific device manuals for details before usage.

## **Usage notes:**

1. Before use please read the manual carefully.
2. Please do not keep the liquid inside the atomizer if the device is not going to be used for a long period.
3. Do not allow the tank to run dry of e-liquid to avoid dry-burning of the atomizer.
4. Please do not drop, throw or mishandle this product as the outer shell or inner components may become damaged.

**Warranty:**

Lumiere Tank Warranty Period: 3 Months from the Purchase Date. Within the 3 Months, some items may not be eligible for service due to misuse, damage, or other failures caused other than by manufacturer defects or premature failure. Please contact Jenson E-Cig for more information and terms of service. The Warranty Card is an important proof for customers to get warranty service, please keep it along with your original receipt, read the card carefully and fill it out correctly. Warranty requests must be accompanied by this card and your original receipt. For more info on warranty policy and processes, please visit our official website [www.jensonecig.com](http://www.jensonecig.com) or call our customer services team on 020 8619 1060.

**Legal Disclaimer**

Intended for use by adults and should not be sold to minors. Please abide by the legal smoking age applicable to the country of use.

**WARNING**

This product is not intended for use by persons under the legal smoking age, non-smokers, women who are pregnant or breastfeeding, or persons with, or at risk of, heart disease, high blood pressure, diabetes, or taking medicine for depression or asthma.

## Warranty

### Purchase Information

Shop name:.....

Shop address:.....

.....

.....

Postcode:.....

Purchase date:.....

Warranty period: 3 months from purchase date

### Purchaser Information

Name:.....

Address:.....

.....

.....

Postcode:.....

Email Address:.....

Thank you for choosing Jenson E-Cig